

# Drag Chain N25, open version, swivel cover at the inner side

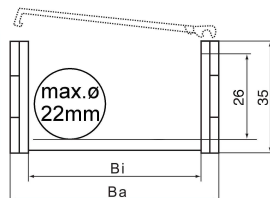
## Schleppkette N25, offene Bauart, Schwenkabweckung innen

Drag chain N25 can be easily opened and closed for insertion of cables with swivel-type cover elements.

Die Schleppkette N25 lässt sich für die Kabeleinführung durch schwenkbare Abdeckelemente einfach öffnen und schließen.



Dimensions in mm:

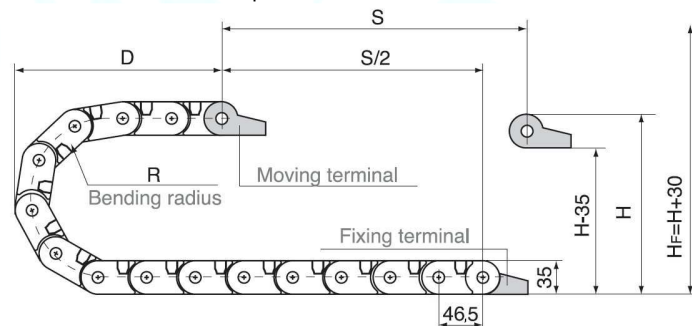


Abmessungen in mm:

Version	-38	-57	-77			
B <sub>a</sub> :	53	72	92			
B <sub>i</sub> :	38	57	77			
R:	Standard 55, optional 75, 100, 125, 150					
H:	= 2 x R + 35 mm					
H <sub>F</sub> :	= H + 30 mm					
K:	= π x R + safety ratio					

Dimensions can deviate up to 1 mm.

Maße können bis zu 1 mm abweichen.

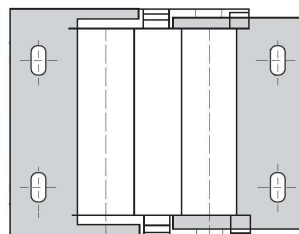


Segments per m:

Segmente pro m: 22

End segments:

Endstücke:



**25.??S.1P** (outer end segment) (äußeres Endstück)  
**25??S.2P** (inner end segment) (inneres Endstück)

Calculation of drag chain dimensions (length):

Berechnung der Schleppkettendimensionierung (Länge):

$$L = S/2 + K$$

L = Length

L = Länge

S = Stroke

S = Fahrweg

D = Distance in final position

D = Maß in Endposition

K = π x R + safety ratio

K = π x R + Sicherheit

H<sub>F</sub> = required clearance

H<sub>F</sub> = erforderliche Einbauhöhe

H<sub>F</sub> = H + 30 mm

R	55	75	100	125	150
H	145	185	235	285	335
D	125	150	170	195	220
K	276	346	414	496	578

Order information: Bestellinformation:

N 25-57 R55

Radius supported by chain element / von der Kette unterstützter Radius  
 Inner width B<sub>i</sub> / Breite innen B<sub>i</sub>  
 Inner height, chain type / Höhe innen, Kettentyp  
 Chain type / Kettentyp

# Drag Chain N25, open version, swivel cover at the inner side

## Schleppkette N25, offene Bauart, Schwenkabdeckung innen

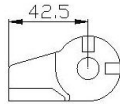
### Single part drawings:

### Einzelteilzeichnungen:

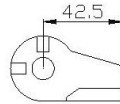
### Mounting options:

### Montageoptionen:

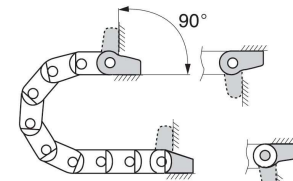
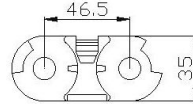
#### Inner end segment



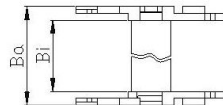
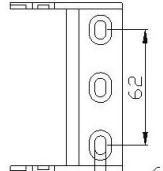
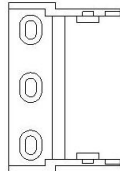
#### Outer end segment



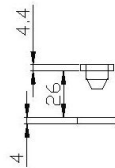
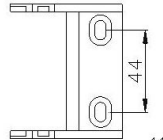
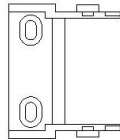
#### Element



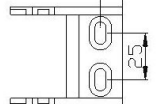
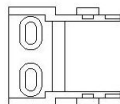
N25-77



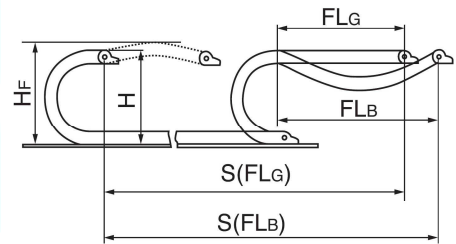
N25-57



N25-38



Unsupported horizontal length:  
Freitragende horizontale Länge:



FLG: with straight upper part  
mit geradem Oberteil

FLB: with permitted deflection  
mit erlaubter Durchbiegung

### Instructions for mounting:

1. Open chain:  
Kette öffnen:

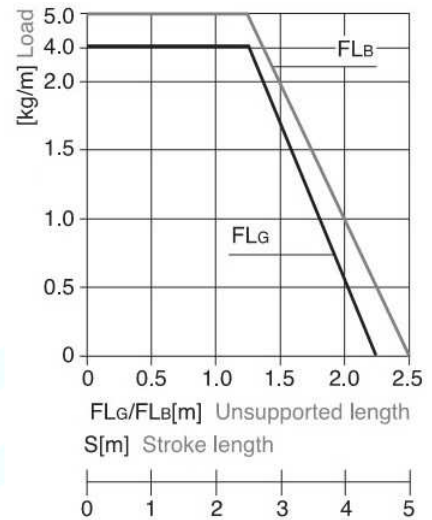


### Montagehinweise:

2. Element separation:  
Elemente trennen:



First open chain in the respective area!  
Kette erst im entsprechenden Bereich öffnen!



### Accessories:



### Zubehör:

**Strain relief comb parts for external fixation**, 4, 6 or 8 teeth, width 38, 58 and 78 mm, hole separation 20, 40 and 60 mm, for 6 mm countersunk screws.

Available for all drag chain versions. On the N25 type, they can be hooked onto the end segments.

**Zugentlastungskämme für externe Anbringung**, 4, 6 oder 8 Zähne, Breite 38, 58 und 78 mm, Lochabstand 20, 40 und 60 mm, für 6 mm Senkschrauben.

Für alle Versionen geeignet. Können beim Typ N25 an den Endstücken eingehängt werden.

### Sample application:

Anwendungsbeispiel:

